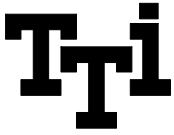


# Solid State Relay



# SAD

AC Control DC

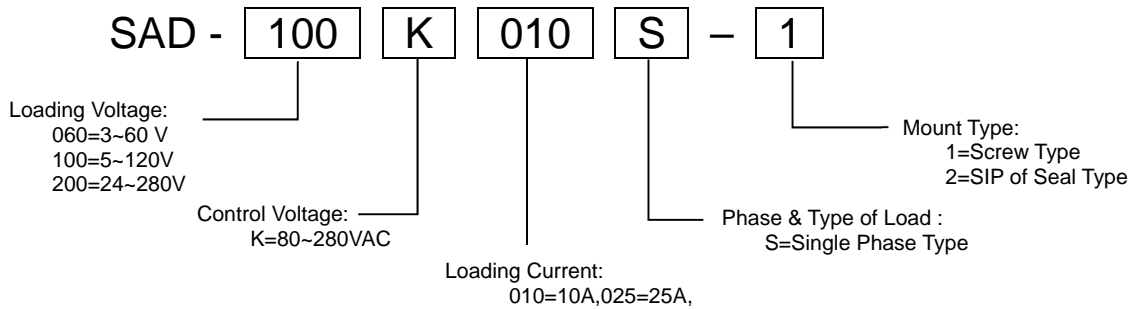
## MAIN FEATURES

- AC Voltage Drive DC loading SSR
- High Stable Reliability
- Non Switching Sparks
- Non Noise
- Non Mechanical Contact
- Low control Power Consumption
- High Speed Reaction

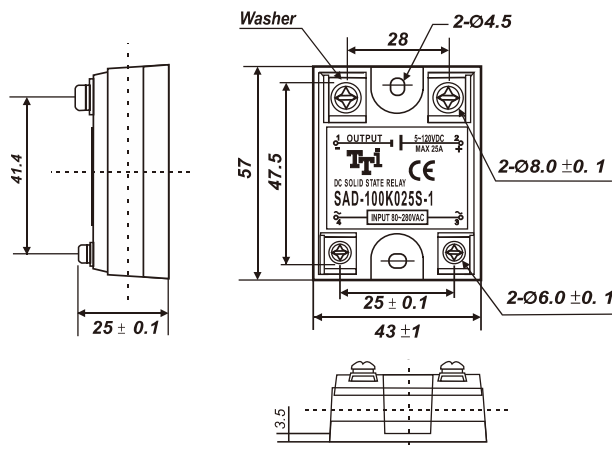
## APPLICATIONS

- Industrial Control Systems
- Lighting Systems
- Vending Machines
- Production Systems
- Temperature Control Systems
- Electronics Home Appliances
- Medical Equipment
- Conveying Systems

## ORDERING INFORMATION



## OUTLINE DIMENSION (unit:mm)

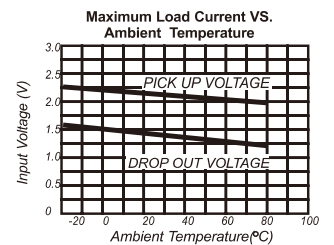
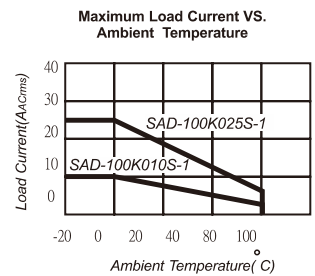
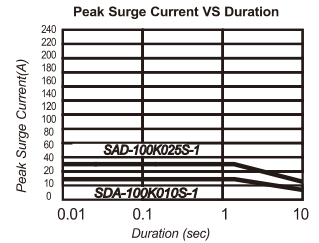
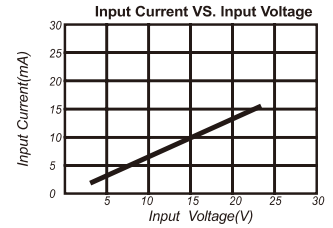


# Solid State Relay

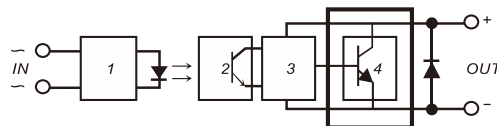
## SPECIFICATIONS

<b>MODEL NO.</b>		SAD-100K010S-1	SAD-200K010S-1
		SAD-100K025S-1	SAD-200K025S-1
<b>MOUNT TYPE</b>		Screw Type	
<b>PHASE</b>		Single Phase	
<b>TYPE OF LOAD</b>		NA	
<b>INPUT</b>	<b>Control Voltage Range</b>	80~280VAC	
	<b>Must Turn Off Voltage</b>	MAX. 10VAC	
	<b>Input Impedance</b>	1.5 K $\Omega$	
<b>OUTPUT</b>	<b>Max. Load Current</b>	10A,25A	
	<b>Load Voltage Range</b>	5~120VDC	5~240VDC
	<b>Min. Blocking Voltage</b>	140VDC	300VDC
	<b>Max. Off-State Leakage</b>	Less 3mA	Less 5mA
	<b>Max.1 cycle Peak Surge</b>	15A,35A	
	<b>Max. Off State dv/dt</b>	100V/ $\mu$ sec	200V/ $\mu$ sec
<b>GENERAL RATING</b>	<b>Isolate Impedance</b>	1G $\Omega$	
	<b>Dielectric Strength</b>	4000VAC RMS	
	<b>Input-Output</b>	4000VAC RMS	
	<b>Input , Output-Case</b>	4000VAC RMS	
	<b>Turn On Time</b>	Less 2 ms	
	<b>Turn Off Time</b>	Less 0.5AC Cycle	
	<b>Frequency Range</b>	47~70Hz	
	<b>Operating Temperature</b>	-20~+80 $^{\circ}$ C	
<b>Switching Type</b>	NA		
<b>Weight (g)</b>		95g	
<b>Compliance</b>		CE , RoHS	

## CHARACTERISTIC CURVES



## EQUIVALENT CIRCUIT



1. Input Circuit
2. Photo Detector
3. Amplifier
4. Protect Circuit