

Latching Relay TRW8

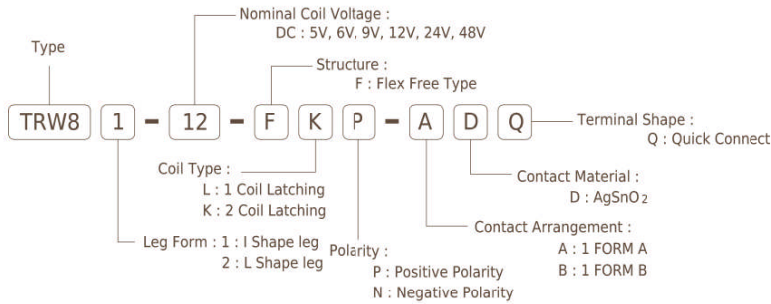
MAIN FEATURES

- ☐ Latching Relays.
- ☐ 90A Switching Capabilities.
- ☐ 4KV dielectric strength between coil and contacts.
- ☐ Environmental friendly product (RoHS compliant).

APPLICATIONS

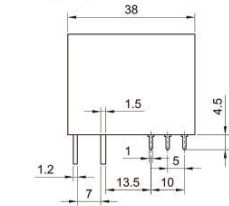
- ☐ Electricity Meter.
- ☐ Time Switches.
- ☐ Ripple Control receiver.
- ☐ Lighting Control.

ORDERING INFORMATION

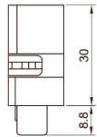
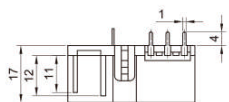
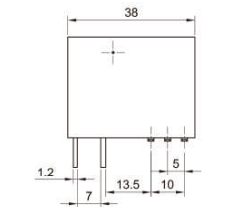


DIMENSION(unit:mm)

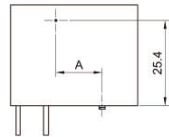
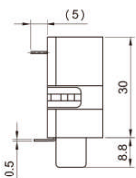
1 Type (I Shape led)



2 Type (L Shape led)



Type	Terminal No.				
	Pin1	Pin2	Pin3	Pin4	Pin5
1 Coil Latching	V	V	V	V	V
2 Coil Latching	V	V	V	V	V



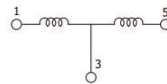
Type	A
1 Coil Latching	13.8mm
2 Coil Latching	11.3mm

WIRING DIAGRAM

1 Coil Latching



2 Coil Latching



Polarity	Type	Terminal No.				
		Pin1	Pin2	Pin3	Pin4	Pin5
Positive	1 Coil Latching	Set	+	-	-	-
		Reset	-	-	-	-
	2 Coil Latching	Set	+	-	-	+
		Reset	-	-	-	+
Negative	1 Coil Latching	Set	-	+	-	-
		Reset	+	+	-	-
	2 Coil Latching	Set	-	+	-	-
		Reset	+	+	-	-

COIL DATA CHART(at 20°C)

Coil Sensitivity	Coil voltage (VDC)	Coil resistance (Ω) ±10%	Set voltage (VDC)	Reset voltage (VDC)	Pulse duration (ms)	Coil power (W)
L type 1 coil latching	5	16	3.5	-3.5	≥50	1.5
	6	24	4.2	-4.2		
	9	54	6.3	-6.3		
	12	96	8.4	-8.4		
	24	384	16.8	-16.8		
	48	1536	33.6	-33.6		
K type 2 coil latching	5	8 + 8	3.5	3.5	≥50	3.0
	6	12 + 12	4.2	4.2		
	9	27 + 27	6.3	6.3		
	12	48 + 48	8.4	8.4		
	24	192 + 192	16.8	16.8		
	48	768 + 768	33.6	33.6		

CONTACT RATING

Item	TRW8
Contact rating (Res. Load)	90A 250VAC
Max. switching voltage	250VAC
Max. switching current	90A
Max. switching power	22500VA
Contact resistance	< 2mΩ (< 100mV)
Contact material	Silver Alloy

PERFORMANCE(at initial value)

Item	TRW8
Insulation resistance	1000MΩ. (at 500VDC)
Dielectric Strength Between coil & contacts Between contacts	4000VAC (1 minute). 2000VAC (1 minute).
Creepage distance	8mm.
Operation time(at nomi. Volt.)	≤20msec.
Release time (at nomi. Volt.)	≤20msec.
Shock resistance Functional Destructive	98m/s ² . 980m/s ² .
Vibration resistance	10Hz to 55Hz D.A. : 1.5mm.
Humidity	98% RH, 40°C.
Temperature range	-40 to +70°C.
Terminals resistance	≤55K.
Life expectancy Mechanically Electrically *	1 x 10 ⁶ ops. (No load) 10000 ops. (Rating load) 6000 ops. (For Meter load)
Weight	Abt. 55g.

NOTICE

- Relay is on the "reset" or "set" status when being released from stock, with the consideration of shock risen from transit and relay mounting, relay would be changed to "set" or "reset" status, therefore, when application (connecting the power supply), please reset the relay to "set" or "reset" status on request.
- In order to maintain "set" or "reset" status, energized voltage to coil should reach the rated voltage, impulse width should be 3 times more than "set" or "reset" time. Do not energize voltage to "set" coil and "reset" coil simultaneously. And also long energized time (more than 1 min) should be avoided.
- In order to avoid changing operate voltage, products should not be kept in strong magnetic field during transportation, storage and application.

1. Tolerance ±0.5mm on all dimensions unless otherwise stated.
2. Tolerance ±0.1mm on PCB DRILLING dimension unless otherwise stated.